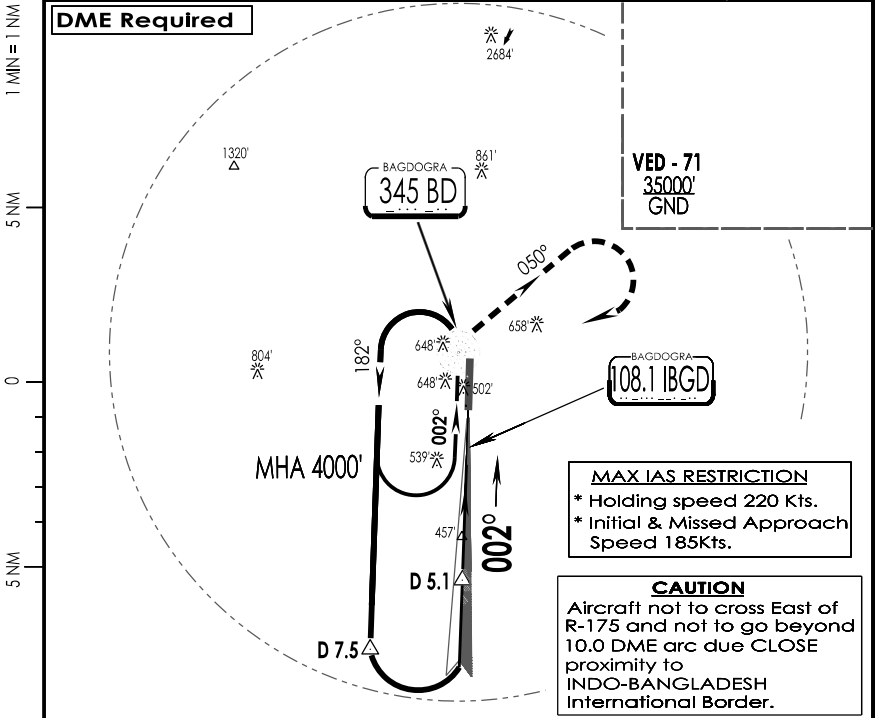


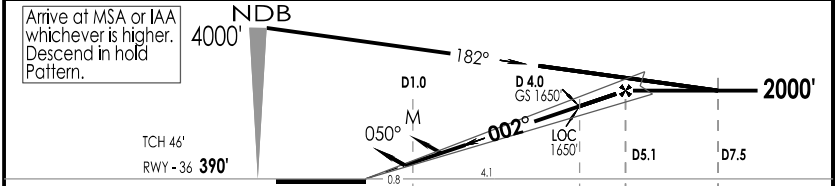
1-2

VEBD IAF BAGDOGRA, INDIA  
BAGDOGRA 07 DEC 21 Eff 23 DEC 21 ILS Y RWY 36

BAGDOGRA Approach 131.2			BAGDOGRA Tower 122.3, VC			ATIS 115.2		
NDB BD <b>345</b>	LOC IBGD <b>108.1</b>	FINAL Apch Crs <b>002°</b>	GS <b>D 4.0 IBGD 1650'</b>	DA(H) As per table	Apt Elev 414'			RWY <b>390'</b>
<b>MISSED APCH :</b> Turn RIGHT Climb on track 050° to 1800' then climbing turn RIGHT to join NDB hold at 4000' or as directed by ATC.								<p>MSA BD NDB</p>
Alt Set: hPa		Rwy Elev: 14 hPa		Trans level: By ATC		Trans alt: 13000'		



LOC GS OUT	IBGD DME ALTITUDE (ft)	2.0	3.0	4.0	5.0
		1020	1340	1650	1970



GND SPEED KTS	80	100	120	140	160	180	CAT II PAPI-L	050°	1800'	4000'
GRADIENT %	425	531	637	743	849	955				
MAP AT : D 1.0 IBGD										

STRAIGHT-IN LANDING RWY 36				CIRCLE - TO - LAND				
DA(H) ILS		LOC (GS OUT) CDFA						
AB : <b>645'</b> (255')		CD : <b>664'</b> (274')		MDA(H) <b>750'</b> (360')				
FULL		ALS OUT		FULL		ALS OUT		
A	RVR 600m	RVR 1300m	RVR 900m	100	<b>960'</b> (546')	2800m		
B				135				
C				180			<b>1060'</b> (646')	3200m
D				205			<b>1260'</b> (846')	3800m
RVR 1500m				Max Kts				
RVR 1600m				MDA (H)				
				VIS				

CHANGES : LIGHTING BOX ICON IPDC, DTE OF OPS (T & H)